

Launceston & Plestin Packet



Occasional newsletter of Launceston and
District Twinning Association

<http://launcestontwinningassociation.weebly.com/>

Editors – George and Patty Taylor

Higher and Over, East Panson, St Giles on the Heath, Launceston, PL15 9SQ

Tel: 01409 211182 email: murraytaylor@waitrose.com

Nº 217 – June, 2021

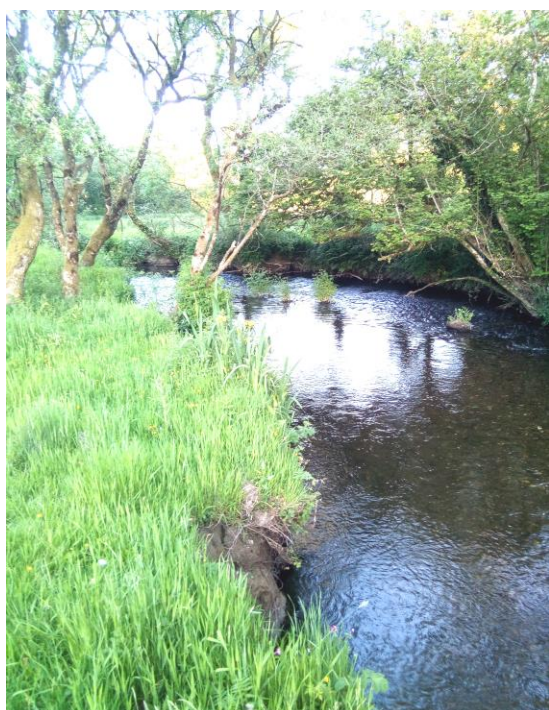
Proceeding with caution – but...

We're planning some fun activities this summer

FIND your picnic baskets and get ready to join our first twinning get-together for 18 months!

In the spirit of these covid times – being sociable, yet sensible – the committee has decided to go ahead with two outdoor events over the summer.

The first will be a picnic and duck race on Saturday, 10 July, at Laneast beside the river Inny and the second will be a barbecue later in the summer.



Our secretary, Vicky Williams, and her husband, Craig, have kindly offered to host the duck race at their home, The Barton, Laneast, PL15 8PN, where there is plenty of parking. The flat field for parking is up at the house and the river (pictured left) and picnic area are a five-to-ten-minute walk downhill.

Vicky says: “4x4's can drive down – or anyone else in a car with an adventurous spirit. You'll also be able to explore the adjacent woodlands.”

Twinners are invited to arrive, with their picnics, from 3pm and the first race will take place at 3.30.

“You buy a duck for the afternoon at a cost of £1, then you pay £1 for each race that you enter it into,” said Vicky. “We will have four or five

races and the winning duck owner will receive a pay-out from the tote at the end of each race.

“We’ve held duck races before,” said Vicky, “and it gets very exciting as people shout encouragement to their ducks.”

Jenny Worth will be running a raffle with lots of wine for prizes



The afternoon also offers a unique opportunity to discover the ancient Laneast Holy Well (left). The medieval holy well, which is Listed Grade II, is a small stone building constructed over a well basin.

The historian Quiller Couch recorded that this well was known as the `wishing well' or the `Jordan well' and that it was consulted for `intimations of the future'.

And finally...

...it has been suggested that members might enjoy meeting socially for the occasional coffee morning or afternoon tea. The idea would be to hold a small, informal gathering at somewhere like the Cricket Club at Lawhitton which has adequate parking and disabled access. (These daytime events could be an autumn activity because many of us find driving and getting about more challenging on dark evenings.)

If that appeals to any members, do please let us know and we'll arrange a trial event.
