

Launceston & Plestin Packet



Occasional newsletter of Launceston and
District Twinning Association

<http://launcestontwinningassociation.weebly.com/>

Editors – George and Patty Taylor

Higher and Over, East Panson, St Giles on the Heath, Launceston, PL15 9SQ

Tel: 01409 211182 email: murraytaylor@waitrose.com

N° 174 - February 2018

Coming next – an irresistible mixture of just desserts!

March double bill of Murder Mystery and Great Cornish Bake-Off

ON MARCH 17 we will stage an evening featuring all the popular ingredients of our legendary Murder Mysteries PLUS the twinner's version of The Great British Bake Off.

Fans of our Murder Mysteries will be delighted to hear that the indomitable Madame Dubonnet will return to spice up the evening with some indiscreet gossip about the characters, and we will be welcoming back some of the seasoned performers who have held our audiences spellbound in the past.

The whole evening will be given a new twist with our first-ever Great Cornish Bake Off. Teams have been invited to provide a starter, a main course and a dessert for the evening. The meals will be judged by a panel of experts...then consumed by the audience!

OUR BAKE-OFF

SEVEN teams, each of three members, have entered the Bake-Off competition.

Each team will be required to provide a three-course balanced meal, designed to be eaten cold, for eight guests.

The teams can decide on their own starters and desserts, but the main course must include pastry. Judging will be based on balance, quality and presentation of individual courses.

Judges will be our own expert chefs: Jill Whitechurch, Graham Cornish and Alan Atkins.

And our murder mystery

ONCE again we have forewarning that a dastardly crime is about to be committed. We also have it on good authority that the intended victim is a local solicitor.

However, all is not as it might appear and you are invited to find out more by joining us on the evening of Saturday, 17 March, at Launceston Cricket Club, Lawhitton, at 7pm.

The irrepressible Madame Dubonnet – Jenny Worth - will be at the centre of things as usual.

The cost for an unparalleled evening out, which includes a three-course meal and a glass of wine, will be £15 for adults and £7.50 for children. Please bring your own soft drinks and extra wine.

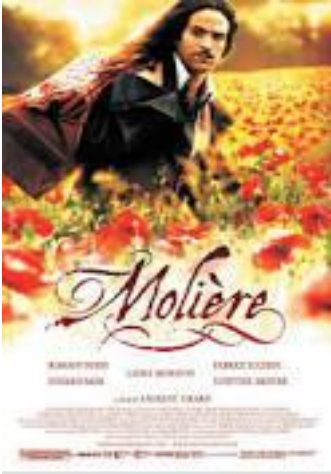
Cheques should be sent to Jean Mansell at Nightoak, 2 Stourscombe Wood, Launceston PL15 9JP stating on the back the event you are attending and the number of adults and children.

**Early booking is advised – we
sold out last year!**



French Film Night, Tuesday March 27

Molière



THIS essential piece of cinema for romantics everywhere follows the fictionalised footsteps of what may have inspired one of France's literary greats, Molière, to pen his infamous masterpiece 'Tartuffe'.

Rotting away in prison and in a mountain of debt, Molière's only hope of freedom is to help the buffoonish Mr Jourdain seduce a beautiful young widow behind his wife's back. Disguised as a priest, he moves in with the Jourdain family to begin a calamitous, hilarious and ultimately romantic set of adventures.

What the critics said:

"Shakespeare in Love ... French style" EVE

"A delightful romantic comedy ... amusing and sumptuous"
SUNDAY MIRROR

The meal choices will be:

- Chicken saut (chicken casserole with carrots and leeks in a white wine mustard cream sauce)
- Beef with port and apricots (slow cooked casserole with garlic, shallots, red wine, port, apricots and parsley)
- Butternut squash curry with chick peas (creamy Thai curry with mango chutney, naan breads and rice)

To book your meal and film deal, please contact Jean Mansell jeanmansell2@gmail.com with your meal choice by Wednesday, 21 March. Cheques (£16 per person) should be sent to Jean at Nighthoak, 2 Stourscombe Wood, Launceston PL15 9JP, and please note on the back of the cheque that the payment is for the French film night and for the number of people.



Beryl Mardon (1931-2018)

TWINNERS were grieved to hear of the death of Beryl Mardon on 17 January, writes Pam Davey.

AFTER a life spent working in the South East and bringing up two sons, Beryl and her husband Peter moved to Polson and ran a restaurant where Beryl, who trained as a Cordon Bleu chef, did all the cooking. She certainly proved to her 'twins' that all the derogatory remarks about British cooking were total wrong!

Peter died in 2011 after they had moved to Lower Chapel. Beryl continued to live an active life, supporting twinning events, playing her beloved bridge and, of course, enjoying the odd glass of wine.

Beryl was a life member of the Twinning Association and we shall miss her positive attitude to life and her ever-cheerful smile.

Visit from our Plestin twins

FOR those who would welcome an early opportunity to discuss the plans for our exchange weekend with their Plestin twins, the committee has agreed outline plans for the two full days that our guests will be with us.

Sunday (29 April) will be a day with families with our big welcome party in the evening at Trethorne Leisure Centre. Monday (30 April) – we have a choice from two destinations for our day out. Both have historic houses, with extensive gardens and grounds with walks and also activities for children. They are:

Powderham Castle, home of the Earls of Devon, which lies in a beautiful deer park on the banks of the River Exe, not far from Exeter, and boasts more than 600 years of history and heritage.



On a Castle tour you will see the majestic rooms and hear fascinating stories about the Courtenay family. The tour lasts a good hour and guides adapt it to suit their audience, so it is an entertaining experience for all.

Being a 600 year old Castle means accessibility is limited for wheelchair users so a wheelchair user would be able to see the ground floor.

Outside, the Walled Garden Play Area and Pets Corner was originally the Victorian walled garden and is now home to the many friendly Powderham pets and an adventure play area. The Walled Garden is also home to the Courtenay Fort and a family picnic area.

The main garden is on a south-facing slope and has a glasshouse built by the architect Charles Fowler, which provides a wet weather shelter for visitors and is used by the Estate to supply plants to the Plant Centre at Powderham Country Store, the small shopping complex just within the Castle gates.

The Estate comprises 3500 acres of land with 4 farms, woodland, 33 houses and approximately 3 miles of foreshore. More information on www.powderham.co.uk/home-devon

Buckland Abbey (National Trust) offers an opportunity to follow in 700 years of footsteps; from the Cistercians who built the Abbey and farmed the estate, to seafarers Grenville and Drake who changed the shape of the house and the fate of the country.

The Abbey is part museum, part house, and is filled with treasures. Outside, there's no mistaking the magnificence of the Great Barn, unchanged for centuries. At the cider house herbaceous borders provide seasonal interest and a secret 'wild' garden.

Beyond there are meadows, orchards and woodlands and way-marked trails with an unmissable carpet of bluebells in Spring. To ensure that all visitors get to see as much of Buckland Abbey as possible, those who find walking very far a bit tricky can ask about hiring an off-road mobility scooter which can be taken around the gardens and the yellow estate walk.



With a children's quiz/trail and family activities available for indoors and outdoors and a restaurant serving hot meals between 12pm and 2.30pm (light snacks and hot drinks available all day) there's something for everyone at Buckland Abbey. <https://www.nationaltrust.org.uk/buckland-abbey>

Full details of the weekend arrival and departure times, the Sunday party and Monday's outings will appear in the next issue of The Packet along with details of how to book.

Maureen's quiz update

THOSE twinnings who took part in Maureen's brain-testing quiz over the Christmas holidays will be impressed to learn that she raised £51 for twinning funds.

And finally...

...A WARM welcome to new twinnings Chris and Mary Stanbury. We look forward to meeting them at future events.

DATES FOR YOUR DIARY

March 17	Murder Mystery and Bake-Off evening, Launceston Cricket Club.
March 27	French Film Night, Jericho's, Launceston, 7pm
April 19	French Film Night, Jericho's, Launceston, 7pm
April 28-May 1	We host visit from Plestin (10pm arrive; 10am depart)
May 22	French Film Night, Jericho's, Launceston, 7pm